

! IMPORTANT

READ BEFORE BEGINNING INSTALLATION:

- **Do not** join fixture lengths together on the floor and lift into place. This introduces significant forces on the joints and will damage the fixtures
- Leave the protective bag on the fixture during installation
- All fixtures should be installed in accordance with national and local building and electrical codes.

🔧 TOOLS REQUIRED

Tools:

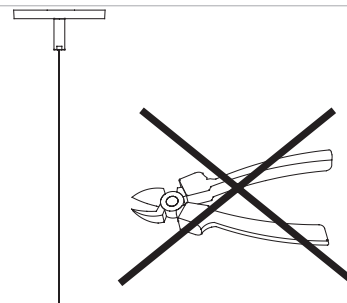
- Level
- Sharp Side Cutter
- Measuring Tool
- Wire Stripper / Knife
- Phillips screwdriver

1 INSTALL CEILING DRIVER ENCLOSURE

***Refer to Driver Enclosure Installation Documents
+ Row Configuration Document***

Install ceiling driver enclosure and aircraft cable suspension per appropriate ceiling type installation instructions - noting the fixture spacing and that the non-power suspension point is NOT the end suspension point.

2 LEAVE AIRCRAFT CABLE FULL LENGTH



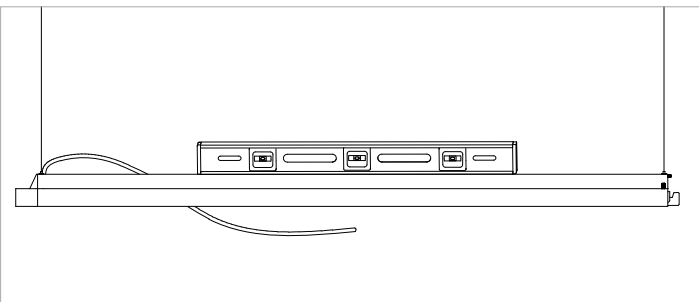
Do NOT trim the aircraft cable
The factory trimmed aircraft cable ends are required for insertion of the cable into the fixture cavity.

3 LAY OUT LUMINAIRES

Refer to Row Configuration Document

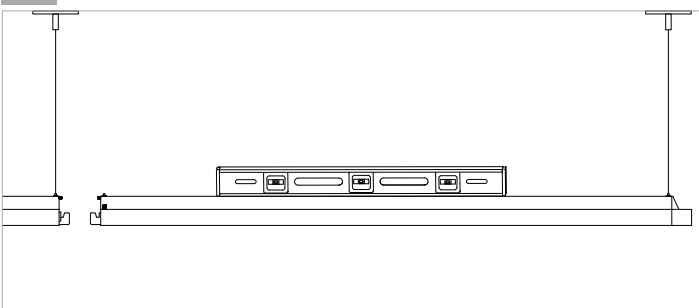
Lay the fixture sections out to ensure the correct sections with ends and joints are supplied. Note that runs will have a Non-Power suspension point located one point in from the end of the run. Ensure fixture sections are laid out to match the Power suspension points that were done on the ceiling.

5 LEVEL FIXTURE + TRIM AIRCRAFT CABLE



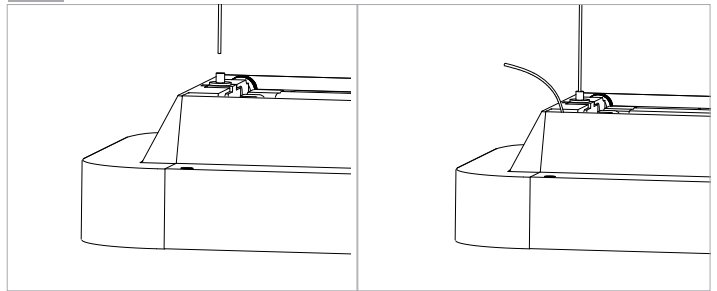
Adjust the height and level the fixture section. The aircraft cable gripper is released by pressing down on the inner tube.
If stand-alone fixture, go to step #9.

7 JOIN FIXTURES + LEVEL



1. Lift the next fixture section into place and insert the one aircraft cable on the far end and join the other end to the previous fixture section by pressing the two fixtures together.
2. Level the far end of the fixture by adjusting the aircraft cable in the gripper.

4 LIFT INTO POSITION

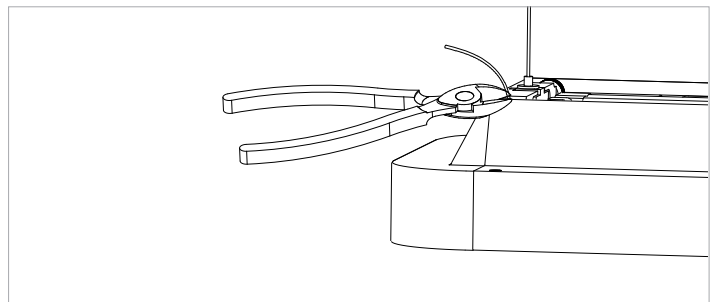


1. Lift the first fixture section (or individual fixture if stand-alone) into place.
2. Insert the aircraft cables into both ends of the fixture mounts (aircraft cable gripper).

NOTE:

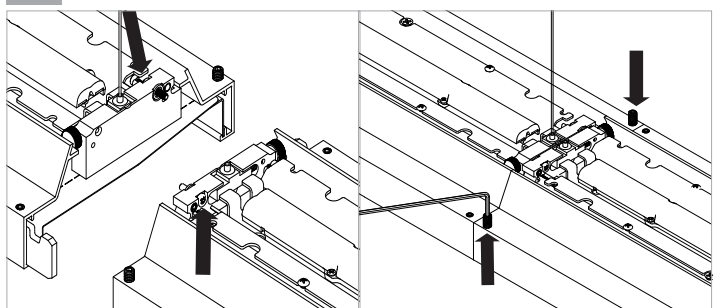
1. For Drywall and Surface ceiling types, ensure to feed the aircraft cable through the canopy cover and threaded sleeve before inserting the cable into the fixture mount.
2. Leave the protective bag on the fixture during installation

6 TRIM EXCESS AIRCRAFT CABLE



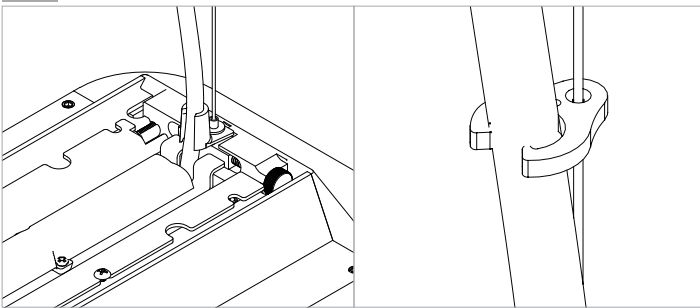
1. Cut excess aircraft cable flush with top of fixture

8 SECURE JOINS



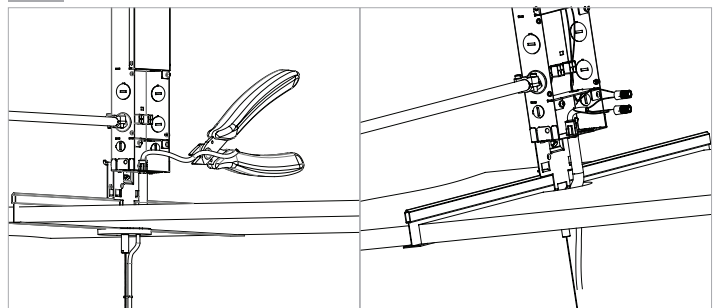
1. Push fixtures together and use a #1 Phillips screwdriver to tighten two top horizontal joining screws. Do not overtighten and do not use power tools.
2. Tighten both joint set screws with supplied allen key tool. Do not overtighten or use power tools.
3. Repeat steps 6, 7 + 8 with each fixture section.

9 ATTACH POWER CORD



1. Clip fixture end of cord into the cord restraint.
2. Lift low-voltage power cord up to ceiling box and attach cord clips.

10 CONNECT TO J-BOX



1. Determine the length of cord required
2. Cut off the excess.
3. Strip the jacket and wires.
4. Connect to the blue and red wires in the low voltage junction box using supplied wire connectors.

NOTE: Depending on ceiling type, the canopy may need to be slid down the cord to complete the low voltage wiring.

NOTE:

For LS1:

4 conductor cords have a red + blue stripe pair and a red + blue solid pair - ensure the pairs are maintained in junction box connectors.

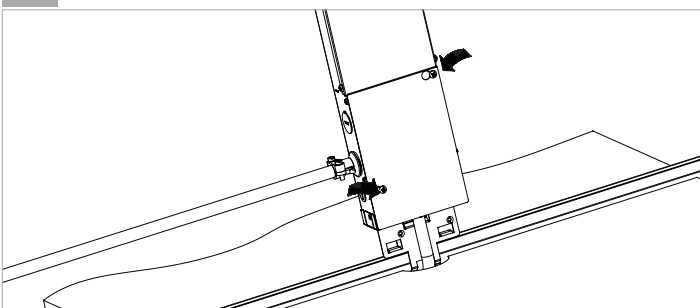
- The solid pair connects to the 4 foot section of fixture nearest the cord.
- The striped pair connects the 4 foot section furthest from the cord.
- Connect the pairs to the appropriate driver circuit (for 2 circuit module, solid pair is circuit 2, striped pair is circuit 1).
- If driver enclosure has only one pair of output wires, connect all red wires together (3) and all blue wires together (3).

For LS3:

Independent Up/Dn Lighting Control: 4 conductor cords have a red + blue stripe pair and a red + blue solid pair - ensure the pairs are maintained in junction box connections.

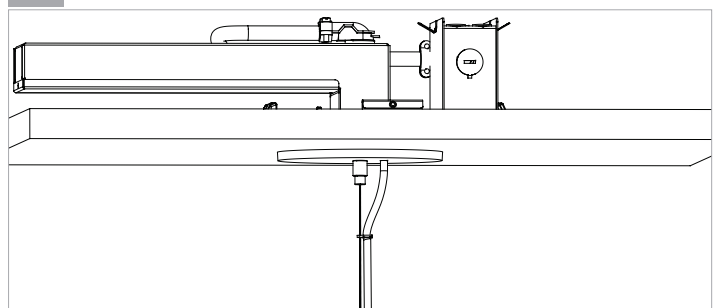
- The solid pair connects to the direct lighting section of fixture (down).
- The striped pair connects to the indirect lighting section of the fixture (up)
- Connect the pairs to the appropriate driver circuit (solid pair is circuit 2 downlight, striped pair is circuit 1 uplight).

11A T-BAR APPLICATIONS: CLOSE WIRING LID



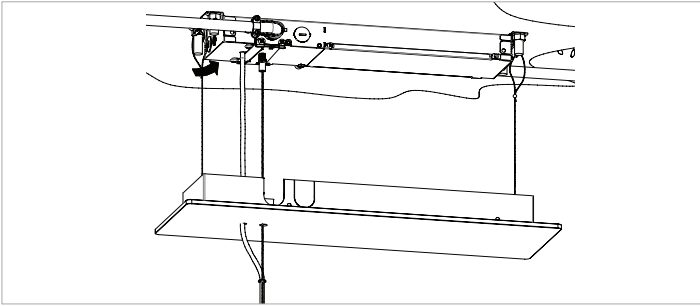
For T-bar ceilings: Close the wiring lid.

11B DRYWALL APPLICATIONS: INSTALL CANOPY



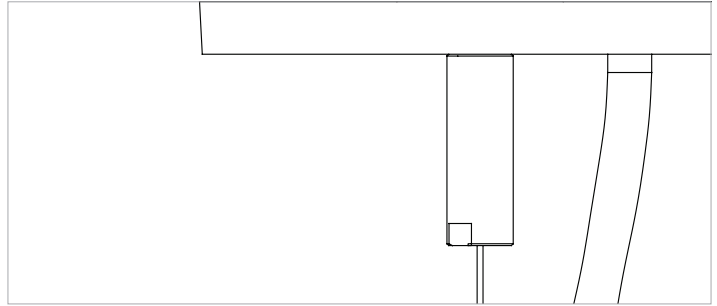
For Drywall ceilings: Lift the canopy into place and tighten the sleeve.

11C SURFACE APPLICATIONS: INSTALL COVER ASSEMBLY



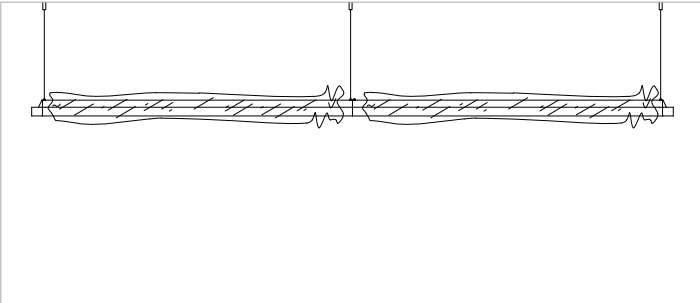
For Surface Mount: Close the low voltage wiring lid, install the cover assembly into place, and tighten the sleeve.

12 SECURE CORD + APPLY POWER.



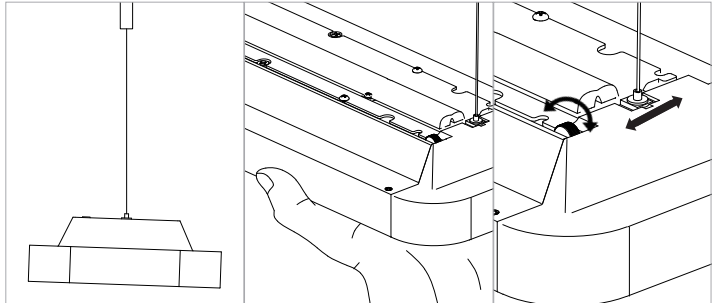
1. Stretch the cord up and reset the cord clips to hold the cord inline with the aircraft cable.
2. Apply power to the driver circuit(s).

13 REMOVE BAG LATER



1. Leave the protective bag on the fixtures until construction and furniture are complete.
2. Fixture can be operated as normal with the bag on.
3. Tear bag at perforation, do not use knives or tools.

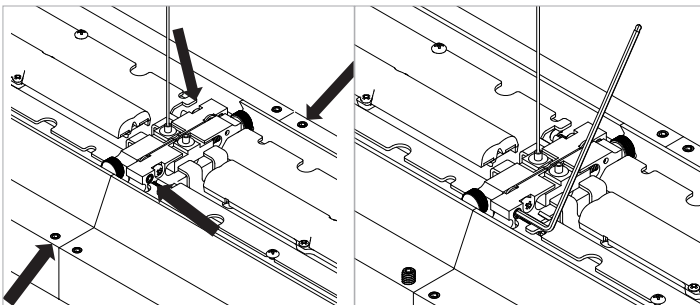
14 ADJUST TILT (IF REQUIRED)



To correct a tilted fixture, a thumbwheel can be adjusted to re-balance the fixture.

1. Relieve pressure off the aircraft cable by lifting the fixture up slightly
2. Turn the thumbwheel to adjust the suspension balance position

15 ADJUST JOINT STRAIGHTNESS (IF REQUIRED)



To straighten a joint after the run is installed, a set screw can be adjusted to apply pressure on one side of a joint location.

1. Partially loosen joining screws using Phillips screwdriver.
2. Partially loosen two joining set screws at opposite edges of fixture using 3/32" Allen Key
3. Tighten the set screw on the side that needs to open to straighten the row (using 3/32" Allen Key). The set screw will push that side of the joint apart to align the row.
4. Retighten the joining screws and edge set screws.