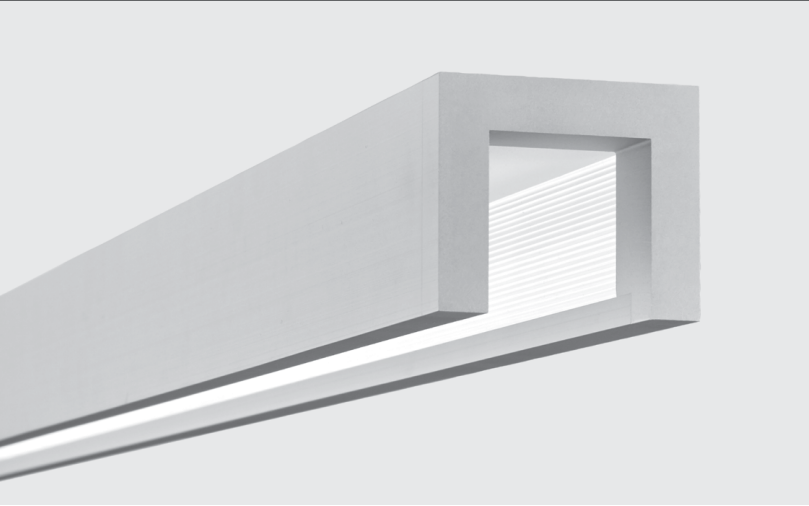


# SPECIFICATION DATA

## PROFILE MINI (PM1 | PM3)

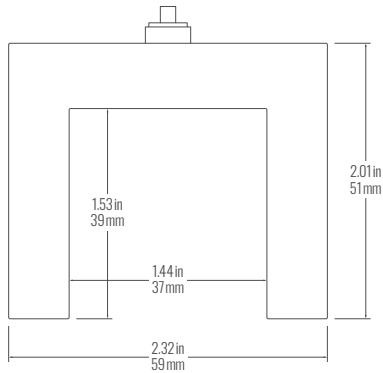


### CATALOG #

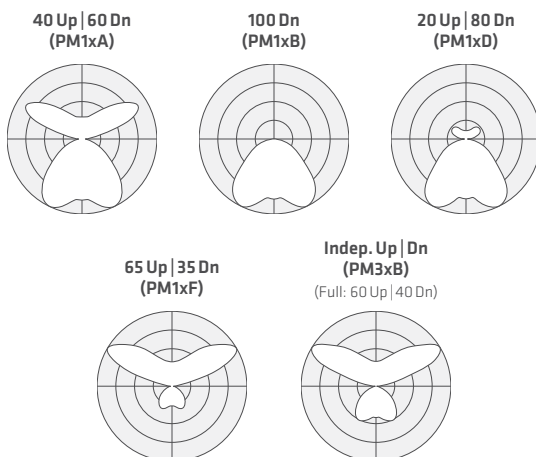
### PROJECT

### NOTES

### CROSS SECTION



### DISTRIBUTIONS



### PERFORMANCE FOCUS

#### 40 Up | 60 Dn, 80 CRI 4000 K (PM1xAx40)

	Energy (W/4ft)	Light (lm/4ft)	Efficacy (lm/W)
<b>Z (80 Dn, 100 Dn)</b>	<b>14 W</b>	1700	123
<b>A</b>	<b>18 W</b>	2150	128
<b>B</b>	<b>22 W</b>	2750	126
<b>C</b>	<b>28 W</b>	3450	126
<b>D (60 Dn, 35 Dn)</b>	<b>36 W</b>	4350	125
Color Matching (SDCM)	Lumen Maintenance (hr)		
	L90 per TM21	L70 Estimate	
< 2	> 60,000	> 200,000	

Nominal values, refer to back pages for full performance data.

### FEATURES

- Signature open aperture design with fully luminous interior and no horizontal lenses or diffusers.
- Small-scale cross section, less than half the area of Profile, for minimal luminaire presence.
- Miniaturized Anidolic optics outperform much bigger luminaires – up to 15 ft o.c. spacing, delivering over 40 fc at 0.4 W/ft<sup>2</sup>.
- Efficacies exceeding 135 lm/W with over 115 lm/W direct from a 1.5" aperture.
- Five direct and direct/indirect general area lighting distributions aligned with Profile, including independent up | down control.
- Four endcap styles, preinstalled for perfect fit and finish.
- Precision machined, clear anodized extruded aluminum fixture body in 4', 6' & 8' modules.

Declare.



# SPECIFICATION DATA

## PROFILE MINI (PM1 | PM3)

### ORDER GUIDE

1	2	3	4	5	6	7	8	9	10	11	OPTIONS	CONTROLS

1	FAMILY	2	ENDCAP	3	DISTRIBUTION	4	ENERGY <sup>1</sup>	5	CRI-CCT	6	FINISH <sup>2</sup>
PM1	Profile Mini	B	Bevel	A	40 Up   60 Dn	Z	14 W <sup>2</sup>	30	80 CRI 3000 K	A	Clear Anodized
		F	Flat	B	100 Dn	A	18 W	35	80 CRI 3500 K	B	Black Powdercoat
		P	Capsule	D	20 Up   80 Dn	B	22 W	40	80 CRI 4000 K	S	Metallic Silver Powdercoat
		S	Square	F	65 Up   35 Dn	C	28 W	93	90 CRI 3000 K	W	White Powdercoat
PM3	Profile Mini Independent Up   Dn					D	36 W <sup>3</sup>	90	90 CRI 3500 K	C	Custom Color (RAL)
				B	Independent Up   Dn Control (Full: 60 Up   40 Dn)			94	90 CRI 4000 K		
							<sup>1</sup> Nominal input power /4 ft. Add 4 W for Battery Pack or 347 V. <sup>2</sup> Z: 100 Dn (B), 20   80 (D) Distr. <sup>3</sup> D: 40   60 (A), 65   35 (F) Distr.			<sup>4</sup> Fixture finish only. Canopies are standard white.	

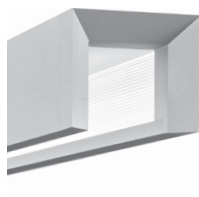
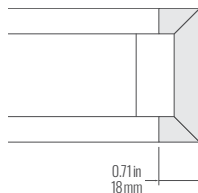
7	LENGTH	8	CEILING TYPE <sup>6</sup>	9	DRIVER	10	VOLTAGE	11	SUSPENSION
<b>04</b>	4 ft	<b>D</b>	Drywall	<b>F1</b>	Non-Dim	<b>M</b>	120-277 V	<b>03</b>	≤ 3 ft
<b>06</b>	6 ft	<b>G</b>	Grid	<b>F2</b>	0-10 V Dim 3%	<b>1</b>	120 V <sup>7</sup>	<b>06</b>	≤ 6 ft
<b>08</b>	8 ft	<b>S</b>	Structure	<b>F4</b>	Line Voltage Dim (Fwd/Rev) 3% 120 V	<b>2</b>	277 V <sup>7</sup>	<b>12</b>	≤ 12 ft
<b>XX</b>	x ft <sup>5</sup>	<b>R</b>	Remote	<b>E1</b>	eldoLED ECO 0-10 V Dim 1%	<b>3</b>	347 V <sup>8</sup>	<b>25</b>	≤ 25 ft
				<b>E2</b>	eldoLED SOLO 0-10 V Dim 0.1%				
				<b>E3</b>	eldoLED ECO DALI-2 DT6 Dim 1%				
				<b>E4</b>	eldoLED SOLO DALI-2 DT6 Dim 0.1%				
				<b>L1</b>	Lutron Hi-Lume 1% EcoSystem (LDE1)				
<sup>5</sup> Specify run length in 2' nominal increments. Important: Row lengths cannot be modified on site (factory installed endcaps & joiners).		<sup>6</sup> Integrated driver with mounting, power feed, suspension + canopy, except for remote.				<sup>7</sup> Fixed voltage only for (F4) Line Dim Driver or nLight controls.			
						<sup>8</sup> 347 V transformer, not with Up   Dn Control or Drywall ceiling.			

OPTIONS		CONTROLS	
WIRING & EMERGENCY <sup>9</sup>		ROW LAYOUT	TYPE & LOCATION <sup>12</sup>
<b>A#</b> Alternate Wiring Module Qty <sup>10</sup> (2nd circuit in 8 ft modules for EM/NL or presentation switching)		<b>C</b> Chicago CCEA <b>F</b> 4 ft End Module <b>G</b> 6 ft Modules <sup>11</sup> <b>N</b> Non-Power End	<b>R</b> Remote Sensor / Controller on Ceiling <b>S</b> Sensor / Controller on Canopy <b>V</b> Controller on Driver / Plenum Side <b>Y</b> Controller on Canopy / Room side
<b>B#</b> Battery Pack Qty			<b>N1</b> Acuity nLight Wired <sup>13</sup> <b>N2</b> Acuity nLight Air r10 <sup>13</sup> <b>N3</b> Acuity nLight Air RPP20 <sup>13</sup> <b>E1</b> Enlighted Smart Sensor <sup>14</sup> <b>L1</b> Lutron Athena Wireless <b>M1</b> Legrand Wattstopper PLUS <b>V1</b> Leviton Intellect Wireless
<b>H#</b> Emergency Switch Qty (GTD or Controller)			
<sup>9</sup> BP & GTD available for 120-277 V in Grid (G), Structure (S) and Remote (R) ceilings. GTD not compatible with (F4) Line Dim driver. <sup>10</sup> Alt. Wiring: not with Up   Dn Control.		<sup>11</sup> For 12 ft & 18 ft rows. <sup>12</sup> Controls selection may be limited by version, protocol or other features – see Controls page. <sup>13</sup> Controller (V,Y) only. <sup>14</sup> Sensor/Controller (R,S) only.	

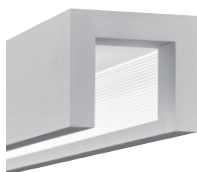
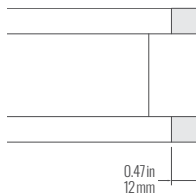
## SPECIFICATION DATA PROFILE MINI (PM1 | PM3)

### ENDCAPS

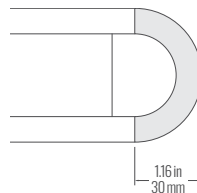
(B) BEVEL



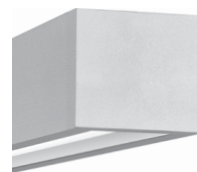
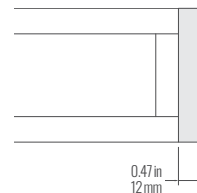
(F) FLAT



(P) CAPSULE

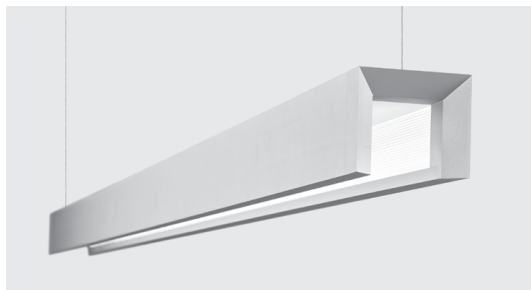


(S) SQUARE

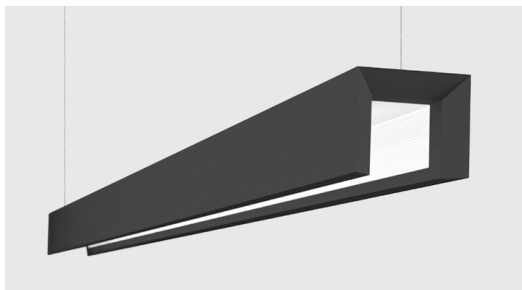


### FINISHES

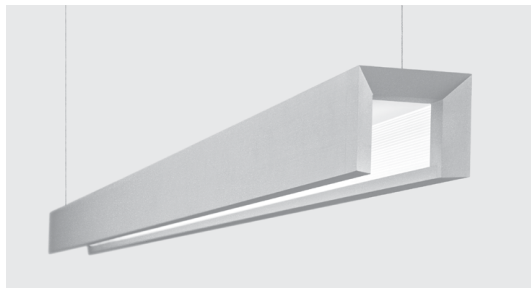
All finishes high temperature powder coated.



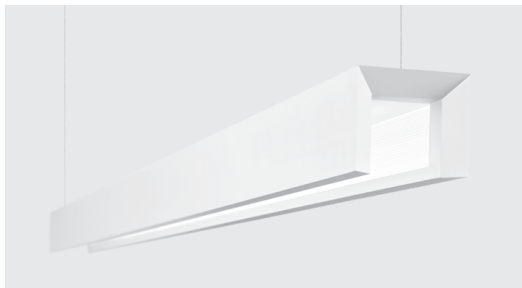
(A) CLEAR ANODIZED



(B) BLACK



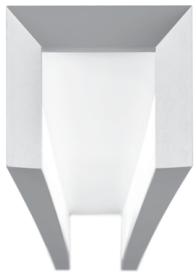
(S) SILVER



(W) WHITE



PRODUCT DETAILS



Vertical Anidolic Optic

RUN LENGTHS

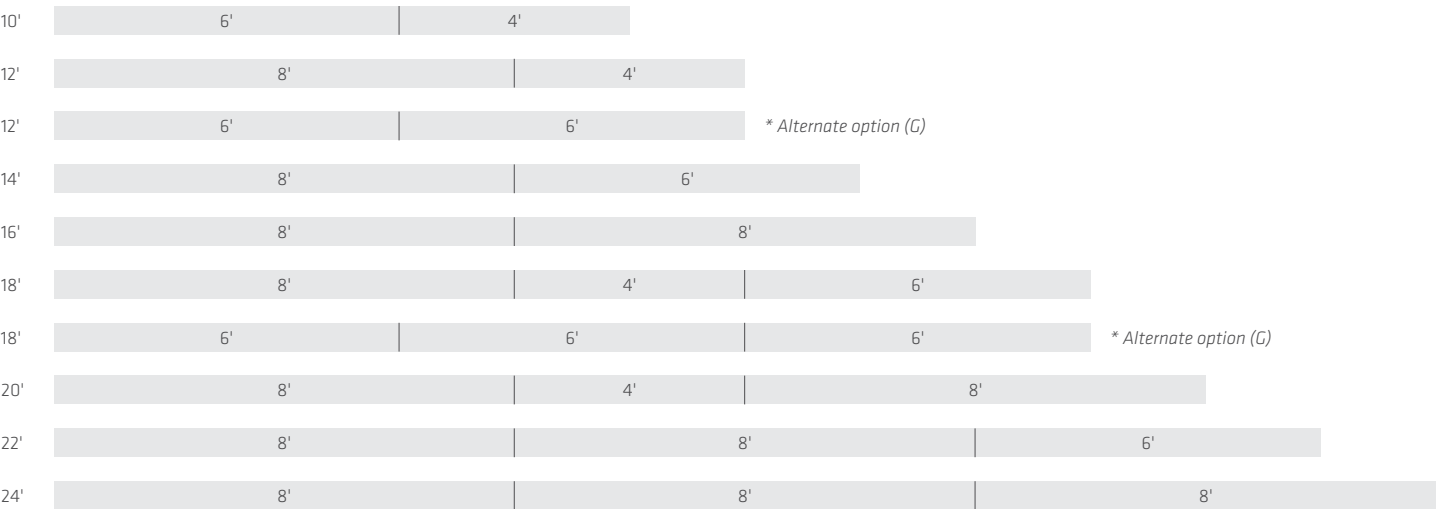
Standalone fixtures are available in 4', 6' + 8' nominal lengths.



**IMPORTANT**

Endcaps and joiners are integral luminaire components.  
Do not remove them to change run layouts.

Run lengths are available in 2' nominal increments.

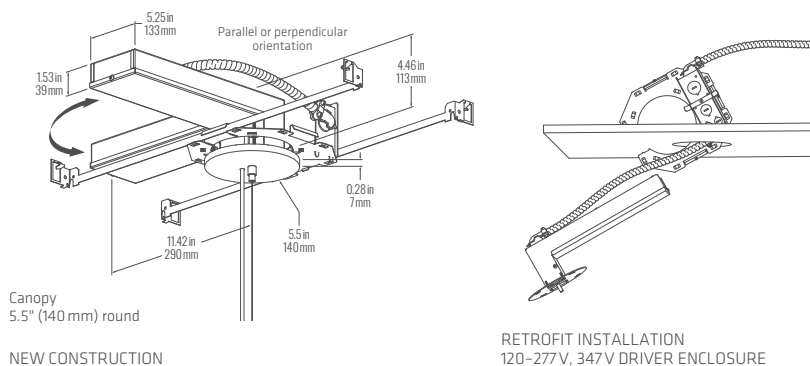


**CEILING INTEGRATION****INTEGRATED DRIVER, MOUNTING, POWER FEED, SUSPENSION AND CANOPY**

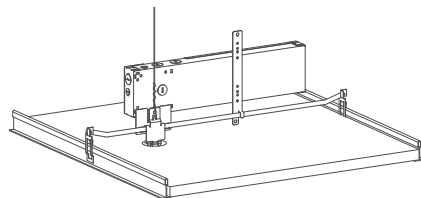
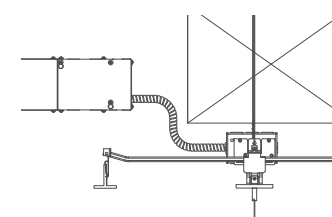
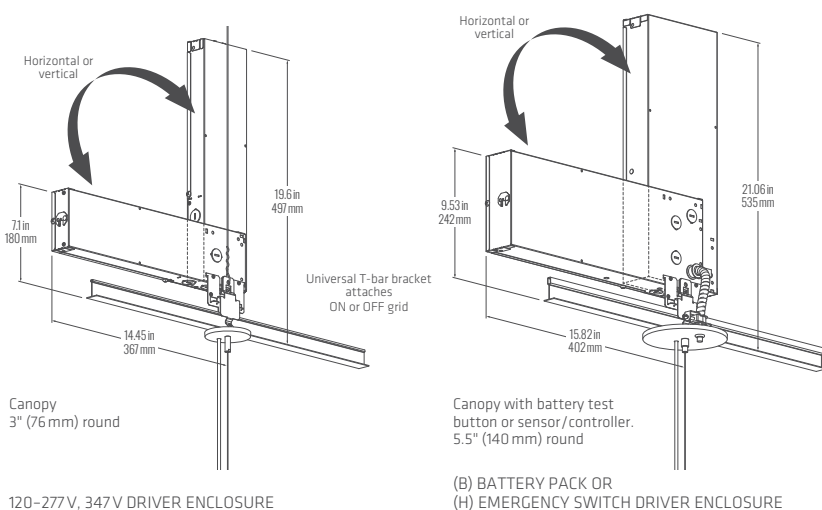
Refer to separate IDC (Integrated Driver Enclosure) datasheet for wiring and detailed dimensions of driver and mounting hardware.

**(D) DRYWALL**

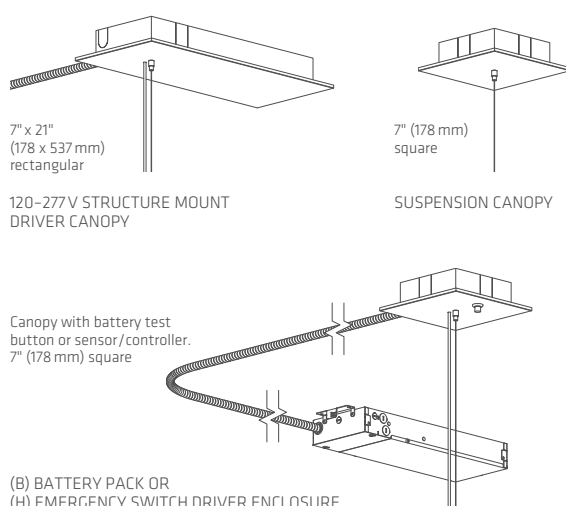
For GWB or panel ceiling < 0.875" (22 mm) thick.

**(C) GRID**

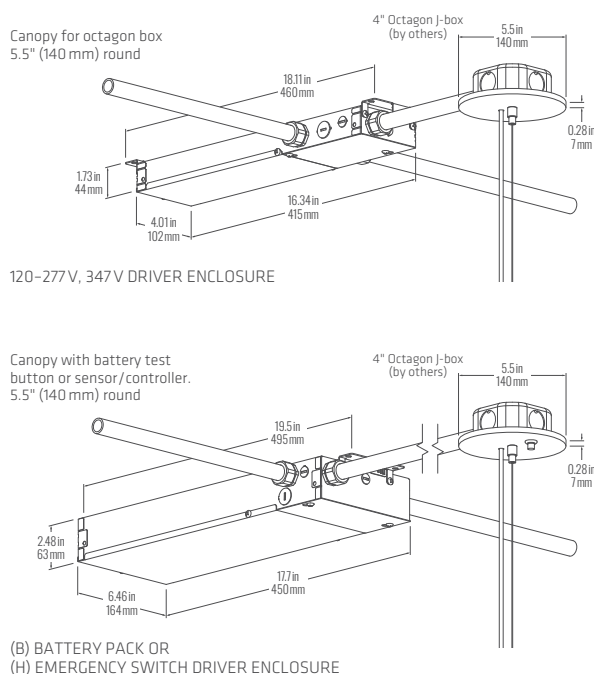
For accessible ceiling grid (acoustic tile) < 1.75" (44 mm) tall.

**(S) STRUCTURE**

For exposed ceiling with conduit or recessed junction box.

**(R) REMOTE**

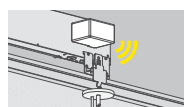
External remote mounted driver for exposed ceiling with conduit or recessed junction box. See Notes for recommended wire gauge.



SPECIFICATION DATA  
PROFILE MINI (PM1 | PM3)

## CONTROLS &amp; SENSORS

## LUMINAIRE INTEGRATION



**V**  
Controller,  
Enclosure/Plenum Side



**R**  
Sensor,  
Remote/on Ceiling



**Y**  
Controller,  
Canopy/Room Side



**S**  
Sensor,  
on Canopy

Sensor/Controller preinstalled into suspension canopy or ceiling collar (for remote tile or J-box lid installation). Plenum rated cable whips and connectors for fast field activation.

## INDEPENDENT UP | DOWN



Separate on/off and dimming control of uplight and downlight. Ideal for presentations and video conferencing.

## PRODUCT VERSION

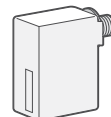
**3** Independent Up | Dn\*

\* Some Controls unavailable with Independent Up/Down due to space constraints – contact Fluxwerx.

**(N1)** Acuity  
nLight Wired



nLight wired, digital network.  
Model: nPS-80-EZ or nPS-80-EZ-ER  
(with **H** – Emergency Switching)

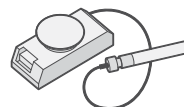


**VN1** nLight Wired Controller, Enclosure/Plenum Side

**(N2, N3)** Acuity  
nLight Air



Acuity nLight wireless network  
interfaces.  
Models: rIO, rPP20

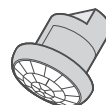


**VN2** nLight rIO Controller, Enclosure/Plenum Side  
**YN2** nLight rIO Controller, Canopy/Room Side  
**VN3** nLight rPP20 Controller, Enclosure/Plenum Side

**(E1)** Siemens  
Enlighted



Siemens Enlighted wireless smart  
sensor-controllers.  
Model: SU-5E-CL



**RE1** Enlighted Smart Sensor, Remote/on Ceiling  
**SE1** Enlighted Smart Sensor, on Fixture/Canopy

Enlighted in Drywall ceiling requires (R) Remote driver.

**(L1)** Lutron  
Athena



Lutron Athena wireless smart  
controllers & sensors.  
Models: A-WN-D01-RF, A-WN-D01-OCC  
For YL1 and SL1:  
Default Athena color to match fixture/canopy color  
Canopy Athena  
WH WH  
SV BK  
BK BK  
For VL1 and RL1: default WH

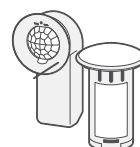


**VL1** Athena Controller, Enclosure/Plenum Side  
**YL1** Athena Controller, Canopy/Room Side  
**RL1** Athena Sensor, Remote/on Ceiling  
**SL1** Athena Sensor, on Canopy

**(M1)** Legrand  
Wattstopper  
PLUS



Wattstopper PLUS wireless smart  
controllers & sensors.  
Models: ZBHA-CLM, EN-CLM-PIR

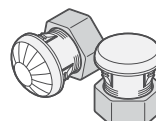


**VM1** Wattstopper PLUS Control Module,  
Enclosure/Plenum Side  
**YM1** Wattstopper PLUS Control Module,  
Canopy/Room Side  
**RM1** SensiLUM Sensor, Remote/on Ceiling  
**SM1** SensiLUM Sensor, on Canopy

**(V1)** Leviton  
Intellect



Leviton Intellect wireless smart  
controllers & sensors.  
Models: ZL0x0, ZL0x5



**VV1** Intellect Controller, Enclosure/Plenum Side  
**YV1** Intellect Controller, Canopy/Room Side  
**RV1** Intellect Sensor, Remote/on Ceiling  
**SV1** Intellect Sensor, on Canopy

Ask us about...

Pass & Seymour®

EATON

DISTECH  
CONTROLS

CRESTRON

CASAMBI

All integrated controls trademarks and logos are the property of their manufacturer and are used under license.

All rights reserved. © Fluxwerx Illumination 2025 604.549.9379 | fluxwerx.com  
Due to continuous product improvements, specifications and dimensions are subject to change without notice.  
Certain options have limited compatibility with some other product selections. Consult www.fluxwerx.com for most current technical information.

SPECIFICATION DATA  
PROFILE MINI (PM1 | PM3)

## NOTES

## CONSTRUCTION

- Anodized, extruded + machined architectural grade aluminum
- Precision machined aluminum joints and endcaps are factory preinstalled for seamless fit
- Stainless steel fasteners
- 0.04" (1.0 mm) stainless steel aircraft cable suspensions
- Clear anodized surface finish or powdercoated in white, metallic silver or black, canopies in white as standard

## OPTICAL

- Anidolic optical structures with linear light extraction elements
- Precision molded high transmittance clear acrylic lenses
- Long life mid-flux LED system designed for typical TM21 lumen maintenance  $\geq$  L90 @ 60,000 h
- Available in 3000 K, 3500 K, 4000 K with CRI  $\geq$  80 and R9  $\geq$  0, or CRI  $\geq$  90 and R9  $\geq$  50, all with color accurate binning  $\leq$  2 SDCM

## ELECTRICAL

- No electrical connections are required at fixture level for installation; low voltage power cords factory preinstalled
- High efficiency multivolt drivers, integrated with suspension and mounting components, for 50–60 Hz 120–277 V and transformer for 347 V
- Power Factor  $> 0.90$
- Total Harmonic Distortion  $< 20\%$
- Dim level: Standard 3%, optional 1% or 0.1%
- Surge Protection: Meets ANSI C82.11 spec and ANSI/IEEE C62.41
- Inrush Current: Meets NEMA 410

## EMERGENCY

- Optional Battery Pack delivers 10 W Class 2 rated output for 90 min. Use 12 W input energy to estimate emergency flux, typically 1150–1750 lm (@ 100–150 lm/W).
- Optional GTD (Generator Transfer Switch), 120–277 V, disables 0–10 V control during emergency for full light output

## WIRE GAUGE

- Recommended low voltage wire gauge (AWG) for minimal losses over distance when REMOTE mounting:  
30 ft | 18 ga  
50 ft | 14 ga  
80 ft | 12 ga

## ENVIRONMENTAL &amp; CARE

- Designed for use in dry or damp indoor locations with ambient temperatures of 0–30°C (32–86°F)
- The luminaire may be damaged by chemicals such as chlorine, solvents, ammonia, alcohol or sulfur in the area of operation or in cleaning products. Damage from contaminants is not covered under warranty.
- Not suitable for natatorium environments, e.g. swimming pools, hot tubs and saunas.
- Clean only by wiping with a slightly water-damp, soft, clean cloth.

## WEIGHT

- Fixture only: ~ 1.3 lb/ft (1.9 kg/m)

## WARRANTY

- 5 year limited warranty on all components and workmanship

## INDEPENDENT TESTING



- IESNA LM79
- IESNA LM80 (LED @ 10,000 h)



## APPROVALS

- UL Listed (USA + Canada)
- CCEA Chicago Plenum
- Living Building Challenge (LBC) Declared

Protected by one or more US patents: 10215344, 10830415, 9733411, 9823406, D731700, D780971, D891670, D890403, D877953, D877954, D877955, 10077891; EU patents: 002263020-0001, 002263020-0002, 002263020-0003.

## DRIVERS + EMERGENCY

STANDARD DRIVER OPTIONS	
<b>OPTOTRONIC®</b> <b>ADVANCE</b> 	<b>F1</b> Non-Dim <b>F2</b> 0–10 V Dim 3% <b>F4</b> Line Voltage Dim 3% (Forward/Reverse) 120 V
<b>eldoLED®</b>	<b>E1</b> eldoLED ECO 0–10 V Dim 1% <b>E2</b> eldoLED SOLO 0–10 V Dim 0.1% <b>E3</b> eldoLED ECO DALI-2 DT6 Dim 1% <b>E4</b> eldoLED SOLO DALI-2 DT6 Dim 0.1%
	<b>L1</b> Lutron Hi-Lume 1% EcoSystem (LDE1)

EMERGENCY OPTIONS	
 	<b>B</b> Battery Pack Bodine BSL310 (10 W) <b>H</b> Emergency Switching Functional Devices ESRB Emergency Lighting Relay

Driver and emergency selection may be limited by product or version.  
For further options, contact Fluxwerx.

SPECIFICATION DATA  
PROFILE MINI (PM1 | PM3)

FAMILY PERFORMANCE

COLOR

80 CRI	4000 K	3500 K	3000 K
Color Rendering (CRI)	83	83	83
Red Index (R9)	6	6	6
Color Matching (SDCM)	< 2		

90 CRI	4000 K	3500 K	3000 K
Color Rendering (CRI)	92	92	92
Red Index (R9)	63	63	59
Color Matching (SDCM)	< 2		

Typical colorimetry values.

LUMEN MAINTENANCE

	A 18 W	B 22 W	C 28 W	D 36 W
L90 per TM-21 (hr)	> 60,000			
L70 Estimate (hr)	> 200,000			

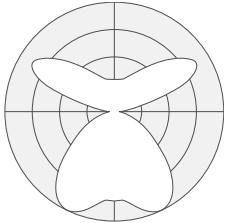
OUTPUT MULTIPLIERS

MULTIPLIER	Applies To	
90 CRI	0.84	All 80 CRI
Battery Pack	0.70	Energy A (18 W)

For 90 CRI, emergency BP or non-white fixtures, use multipliers to scale published Light (lm), Efficacy (lm/W), Intensity (Cd), Luminance (Cd/m²) and IES files.

VERSION PERFORMANCE

PM1xA – 40 Up | 60 Dn, 80 CRI

CONFIGURATION			LIGHT & POWER			VISUAL COMFORT		LIGHT DISTRIBUTION
CCT	ENERGY (NOM.)		LIGHT (lm/4ft)	POWER (W/4ft)	EFFICACY (lm/W)	MAX INTENSITY 45-90° (Cd)	MAX LUMINANCE 45-90° (Cd/m²)	
PM1xAx40 4000 K	A	18 W	2182	17.03	128.2	364	6,508	 Profile Mini Suspended 42% Up   58% Dn
	B	22 W	2741	21.80	125.7	457	8,177	
	C	28 W	3464	27.60	125.5	577	10,334	
	D	36 W	4387	35.08	125.1	731	13,087	
PM1xAx35 3500 K	A	18 W	2132	17.03	125.2	355	6,359	
	B	22 W	2678	21.80	122.9	446	7,990	
	C	28 W	3385	27.60	122.6	564	10,097	
	D	36 W	4286	35.08	122.2	714	12,786	
PM1xAx30 3000 K	A	18 W	2082	16.88	123.3	347	6,210	
	B	22 W	2615	21.80	120.0	436	7,803	
	C	28 W	3305	27.60	119.8	551	9,860	
	D	36 W	4186	35.08	119.3	698	12,488	

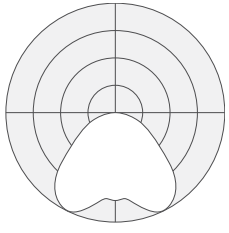


# SPECIFICATION DATA

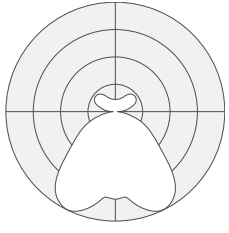
## PROFILE MINI (PM1 | PM3)

### VERSION PERFORMANCE

#### PM1xB – 100 Dn, 80 CRI

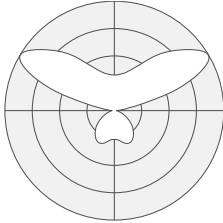
CONFIGURATION			LIGHT & POWER			VISUAL COMFORT		LIGHT DISTRIBUTION
CCT	ENERGY (NOM.)		LIGHT (lm/4ft)	POWER (W/4ft)	EFFICACY (lm/W)	MAX INTENSITY 45-90° (Cd)	MAX LUMINANCE 45-90° (Cd/m²)	
PM1xBx40 4000 K	Z	14 W	1629	13.82	117.9	474	8,556	 <p>Profile Mini Suspended 100% Dn</p>
	A	18 W	2023	17.23	117.4	589	10,625	
	B	22 W	2556	22.24	115.0	744	13,424	
	C	28 W	3195	28.21	113.3	930	16,781	
PM1xBx35 3500 K	Z	14 W	1593	13.82	115.2	463	8,364	
	A	18 W	1971	17.23	114.4	574	10,351	
	B	22 W	2490	22.24	112.0	725	13,078	
	C	28 W	3113	28.21	110.3	906	16,347	
PM1xBx30 3000 K	Z	14 W	1556	13.78	112.9	453	8,172	
	A	18 W	1919	17.23	111.3	558	10,076	
	B	22 W	2424	22.24	109.0	705	12,730	
	C	28 W	3030	28.04	108.0	882	15,916	

#### PM1xD – 20 Up | 80 Dn, 80 CRI

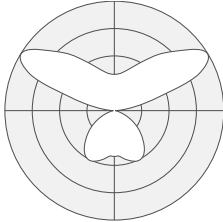
CONFIGURATION			LIGHT & POWER			VISUAL COMFORT		LIGHT DISTRIBUTION
CCT	ENERGY (NOM.)		LIGHT (lm/4ft)	POWER (W/4ft)	EFFICACY (lm/W)	MAX INTENSITY 45-90° (Cd)	MAX LUMINANCE 45-90° (Cd/m²)	
PM1xDx40 4000 K	Z	14 W	1697	13.82	122.8	384	7,175	 <p>Profile Mini Suspended 21% Up   79% Dn</p>
	A	18 W	2107	17.23	122.3	477	8,911	
	B	22 W	2662	22.24	119.7	603	11,257	
	C	28 W	3327	28.21	118.0	753	14,072	
PM1xDx35 3500 K	Z	14 W	1653	13.82	119.6	374	6,991	
	A	18 W	2052	17.23	119.1	465	8,680	
	B	22 W	2593	22.24	116.6	587	10,968	
	C	28 W	3242	28.21	114.9	734	13,709	
PM1xDx30 3000 K	Z	14 W	1609	13.82	116.4	364	6,804	
	A	18 W	1998	17.23	116.0	452	8,449	
	B	22 W	2524	22.24	113.5	572	10,676	
	C	28 W	3156	28.21	111.9	714	13,347	

VERSION PERFORMANCE

PM1xF – 65 Up | 35 Dn, 80 CRI

CONFIGURATION			LIGHT & POWER			VISUAL COMFORT		LIGHT DISTRIBUTION
CCT	ENERGY (NOM.)		LIGHT (lm/4ft)	POWER (W/4ft)	EFFICACY (lm/W)	MAX INTENSITY 45-90° (Cd)	MAX LUMINANCE 45-90° (Cd/m²)	
PM1xFx40 4000 K	A	18 W	2291	17.03	134.6	232	3,986	 Profile Mini Suspended 65% Up   35% Dn
	B	22 W	2878	21.80	132.0	291	5,006	
	C	28 W	3638	27.60	131.8	368	6,327	
	D	36 W	4607	35.16	131.0	466	8,013	
PM1xFx35 3500 K	A	18 W	2239	17.03	131.5	226	3,896	
	B	22 W	2812	21.80	129.0	284	4,892	
	C	28 W	3554	27.60	128.8	359	6,184	
	D	36 W	4501	35.16	128.0	455	7,832	
PM1xFx30 3000 K	A	18 W	2186	17.03	128.4	221	3,805	
	B	22 W	2747	21.80	126.0	278	4,778	
	C	28 W	3471	27.60	125.8	351	6,038	
	D	36 W	4396	35.16	125.0	444	7,648	

PM3xB – Indep. Up | Dn, 80 CRI

CONFIGURATION			LIGHT & POWER			VISUAL COMFORT		LIGHT DISTRIBUTION
CCT	ENERGY (NOM.)		LIGHT (lm/4ft)	POWER (W/4ft)	EFFICACY (lm/W)	MAX INTENSITY 45-90° (Cd)	MAX LUMINANCE 45-90° (Cd/m²)	
PM3xBx40 4000 K	D	36 W	4474	35.63	125.6	537	9,837	 Profile Mini Suspended 58% Up   42% Dn
PM3xBx35 3500 K	D	36 W	4371	35.63	122.7	525	9,609	
PM3xBx30 3000 K	D	36 W	4269	35.63	119.8	512	9,384	

Photometry Reports: 12757824, 12861772

Photometry baseline established with integrating sphere and goniophotometer results from an independent accredited testing laboratory per IES LM-79, ANSI C78.377. Remaining values scaled from baseline data per IES LM-63. Output and power may vary by up to 5%.