

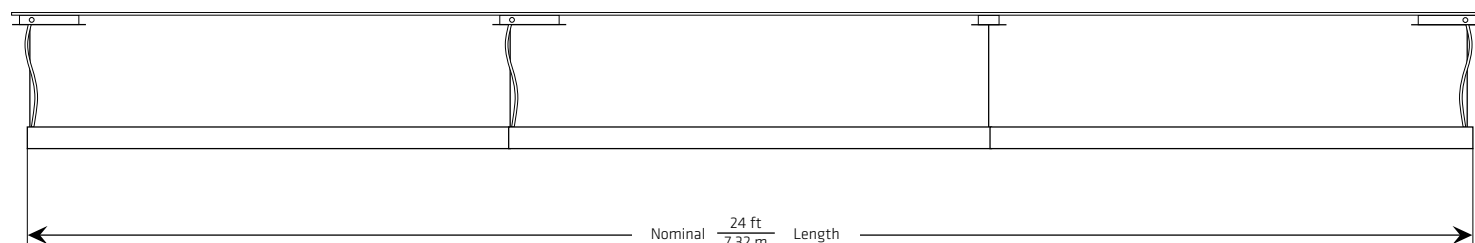


Power Feed Canopy



Suspension Canopy

## Installation Example



Ceiling	(S) STRUCTURE INTEGRATED MOUNTING	Type
Project		
Product		
Notes		

## FEATURES

- Integrated driver, suspension and power feed location
- Remote BP driver can be surface mounted to walls or ceilings
- Low profile design for 120V-277 V, 347V, or BP
- For ceiling conditions with surface conduit or recessed J-boxes
- Drivers and architectural canopies can be installed in advance
- Powdercoat sheet metal architectural canopies; no visible fasteners
- Multiple orientations for easy installation and maintenance
- Self-retained architectural canopies with safety cable
- Integral barriered driver enclosure for line and low voltages
- Prewired driver with integral junction boxes
- Supplied with all pushwire and twistwire electrical connectors
- Multiple 1/2" trade knockouts for conduit; rigid or flexible

*Some driver options have limited compatibility with certain product wiring and mounting type selections. Consult factory for details.*

## CONSTRUCTION

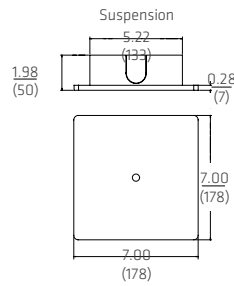
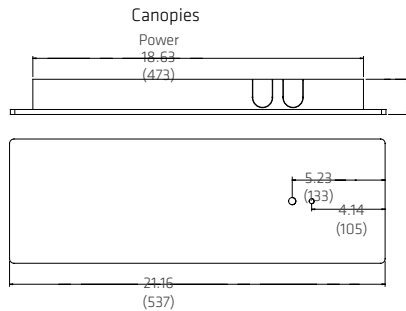
- Frame and driver enclosure formed in 20 gauge CRS; satin coat
- Canopy stamped in 22 gauge steel; white powdercoat
- 0.04" (1.0 mm) stainless steel aircraft cable; factory crimped
- Prewired driver, #18 gauge solid; pushwire and twistwire connectors

## APPROVALS

- Certified by UL for dry or damp location installation in US and Canada

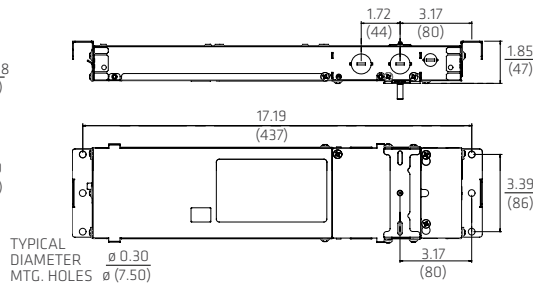
120/277/347 version DIMENSIONS

inches  
(mm)

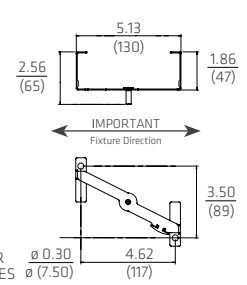


### Anchor Locations

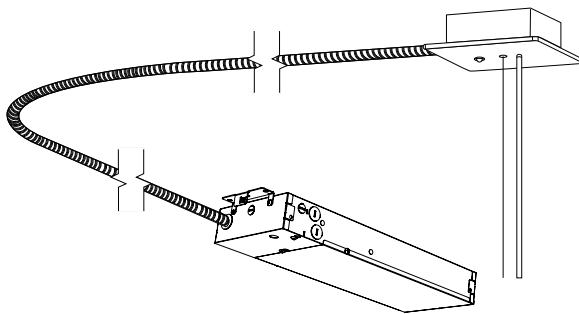
#### Driver + Suspension Point



#### Non Power Suspension Mounting Bracket



### Battery Pack Option (120/277 only)

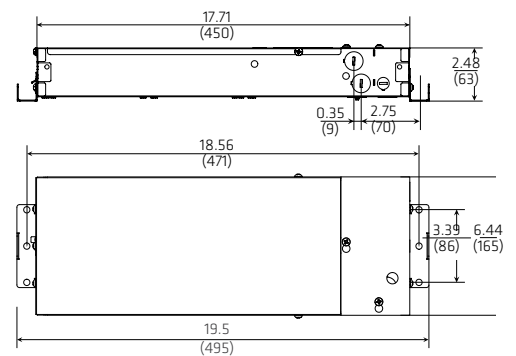


Note: 8 foot battery pack fixtures require 8 low voltage wires (12 for Dynamic White).

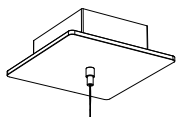
Recommended Wire Gauge for Minimal Losses (AWG)  
30ft. | 18 ga. 50ft. | 14 ga. 80ft. | 12 ga.

### Anchor Locations

#### Remote Driver



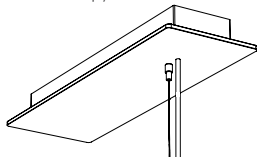
#### Suspension Canopy



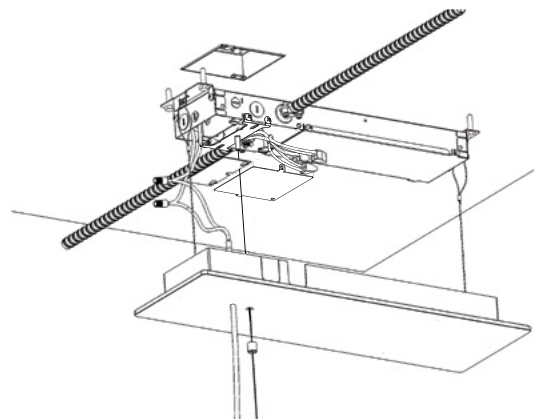
#### Suspension Canopy Mounting Bracket



#### Power Canopy



#### Installation Wiring Details



#### Line Voltage Wiring (Driver to Panel)

- 1/2" trade knockout available for installation with recessed jboxes
- Recessed jbox or conduit and wiring to/from panel supplied and installed by others
- Pushwire connectors supplied by Fluxwerx; connected by others
- Appropriate fasteners for attachment to building structure supplied and installed by others
- Integral safety restraint aircraft cable

#### Low Voltage Wiring (Driver to Fixture)

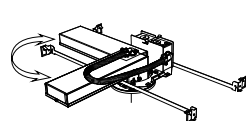
- Twistwire connectors supplied by Fluxwerx; connected by others
- LV powercord preinstalled on fixture by Fluxwerx
- Canopy safety retention ring included
- LV powercord may have 2, 4 or 8 conductors

### Alternative Mounting Options

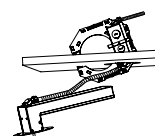
#### (D) Drywall Integrated

New or Retrofit

Integrated driver, power feed and mounting suspension points suitable for GWB or plaster thicknesses of < 0.875" (22 mm)



Perpendicular or Parallel



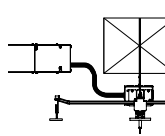
Retrofit Method

120-277V 347V Battery Pack 0-10V Dim Lutron eldoLED

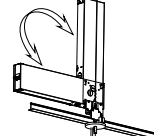
#### (G) Grid Integrated

ON or OFF Grid

Integrated clip, driver, power feed and mounting suspension points suitable for accessible ceiling grid heights of < 1.75" (44 mm)



Detached Installation Method



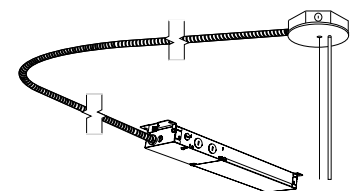
Horizontal or Vertical

120-277V 347V Battery Pack 0-10V Dim Lutron eldoLED

#### (R) Remote

Hard Lid Ceilings

External remote mounted driver. Power feed and suspension points suitable for exposed conduit or recessed junction boxes



120-277V 347V Battery Pack 0-10V Dim Lutron eldoLED

Recommended Wire Gauge for Minimal Losses (AWG)

30ft. | 18 ga. 50ft. | 14 ga. 80ft. | 12 ga.